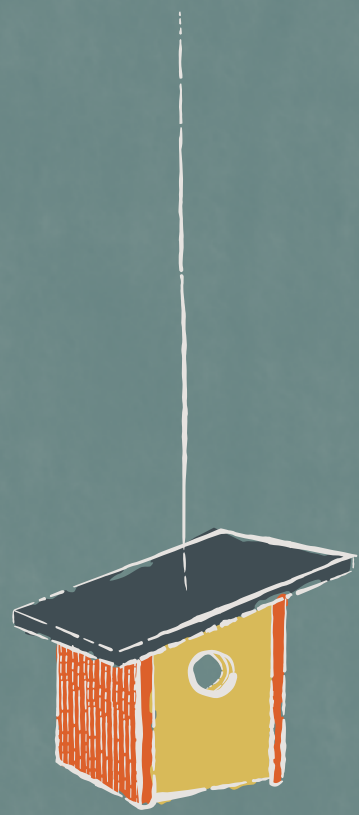


PAINTED TREE

McKINNEY TEXAS



COMMUNITY GUIDE

a journeyer's companion

A trailside community

is closer than you think.



*Map not to scale



PAINTED TREE

3 miles northwest of Downtown McKinney, Texas

PAINTEDTREETX.COM



A COMMUNITY BY OXLAND GROUP

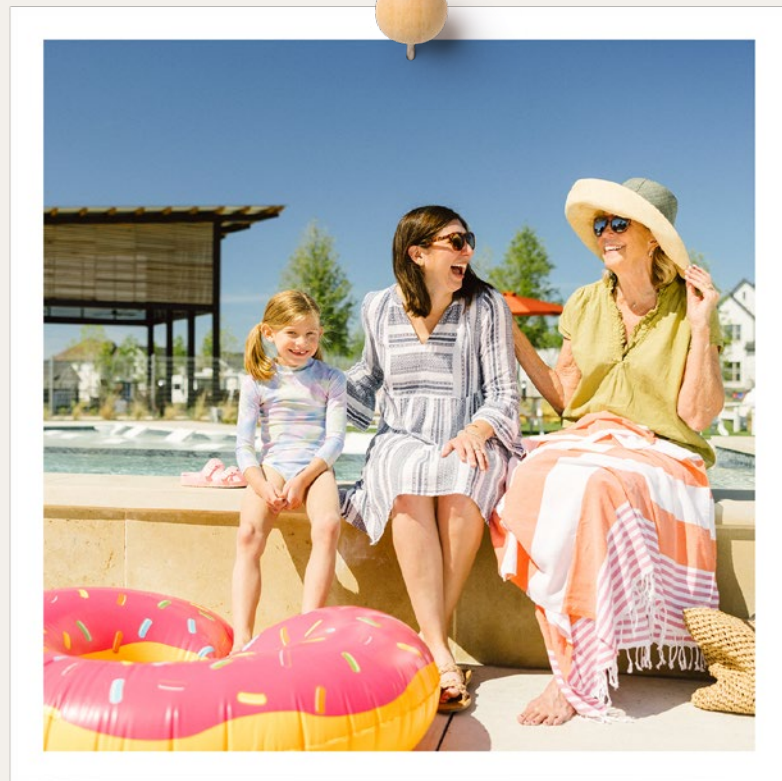
Painted Tree is currently under development by Oxland Group — statements and images are conceptual in nature, subject to change without notice, and are provided for general informational purposes only and shall not be relied upon. July 2024

© 2024 Painted Tree, McKinney, Texas | EQUAL HOUSING OPPORTUNITY



DOWNTOWN MCKINNEY

Rooted in Texas hospitality and blooming with creativity is Historic Downtown McKinney. Imagine: live music, eclectic boutiques, mouth-watering eats and more, just three miles from your front door.



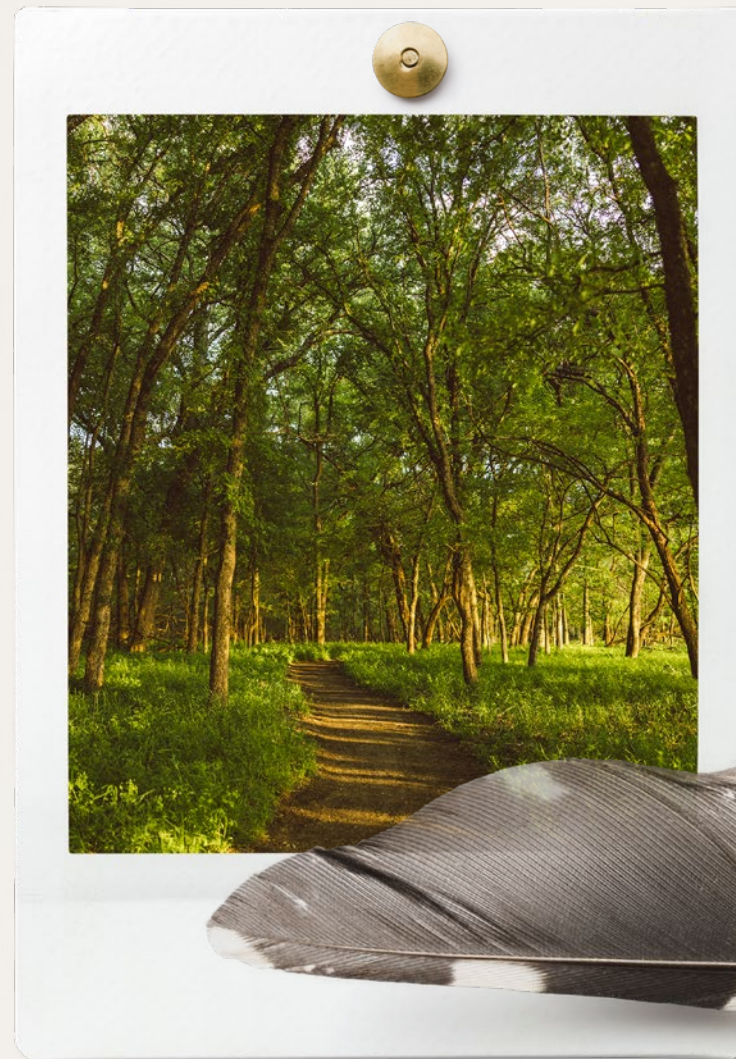
A PEOPLE PLACE

Painted Tree is a community that comes together for events of all kinds. From cultural to seasonal to simply celebrating a sunset. There's always something going on.



THE GREAT OUTDOORS

Two hundred and fifty acres. That's how much we've set aside for parks, trails and the all-around grandness of the world outside. Isn't it funny how easily our natural habitat can become habit?

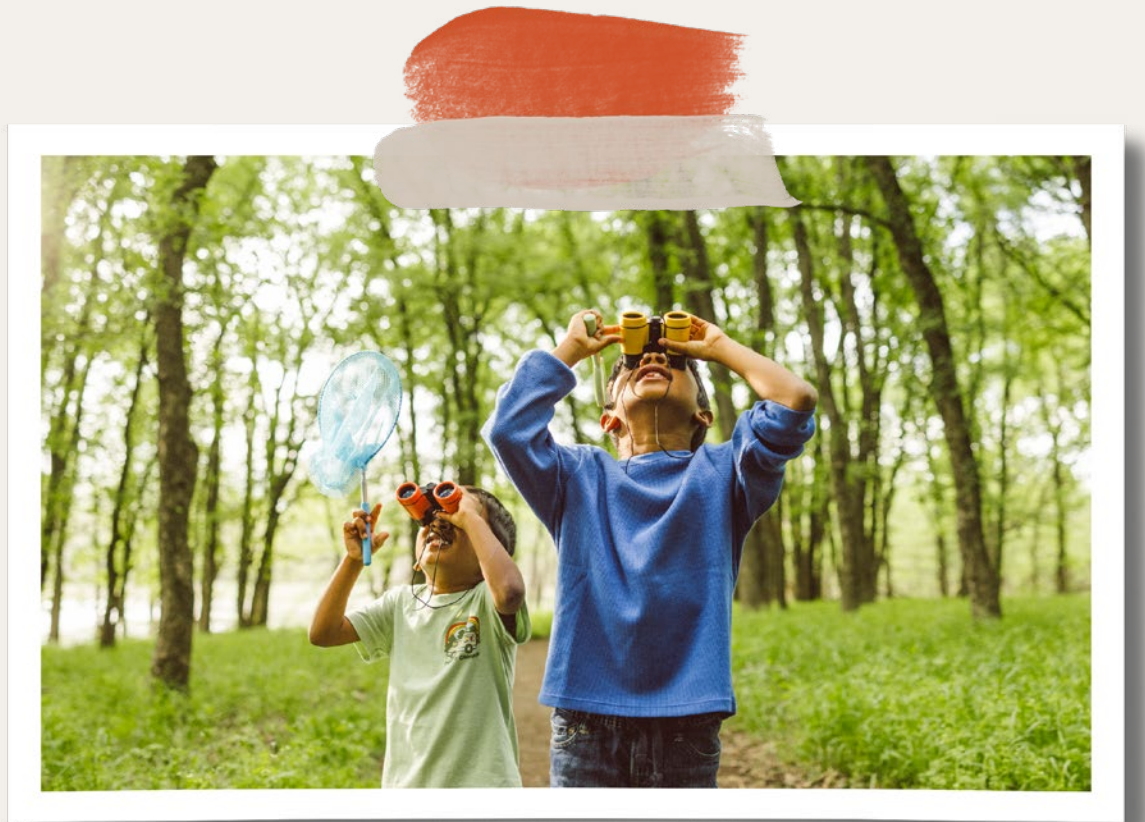


MCK — TEX

PAINTED TREE

3 VILLAGE TRAILHEAD

Some days are made for exploration. Some days are made for relaxation. Village Trailhead offers a bit of both. Relax and recharge with this pool's sun shelf and water feature. Or get the blood pumping on its pump track. Either way, you're in for one wonderful day. Now open.

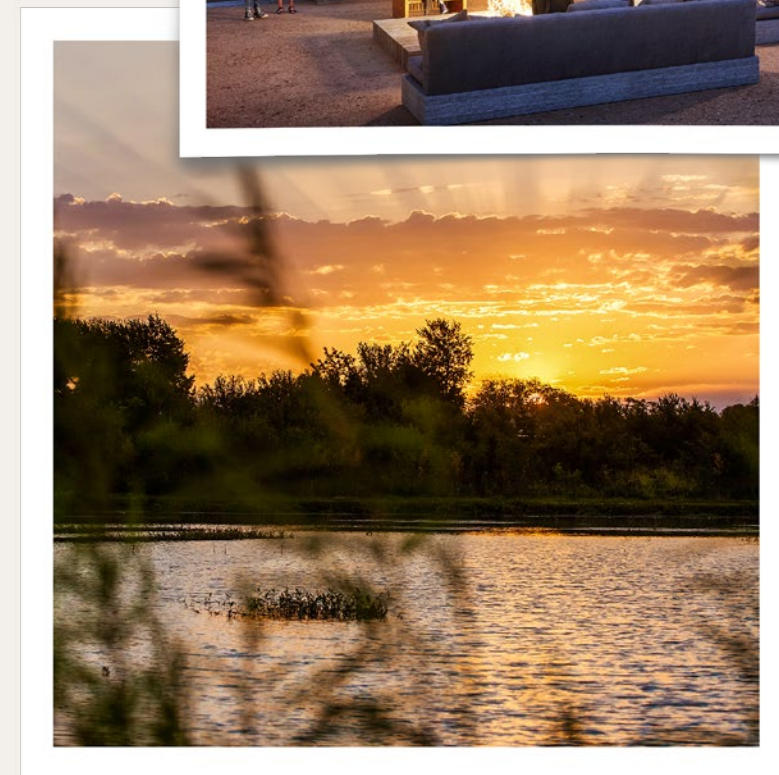


SMART BY NATURE

McKinney Independent School District schools are known for their outstanding arts programs, well-rounded curriculum and competitive athletic teams. There are also a variety of exceptional private and charter schools in the area offering students a different path to academic success, including Learning Tree Montessori School within Painted Tree.

2 LAKESIDE TRAILHEAD

Water, water everywhere. Lakeside Trailhead features a relaxing pool, comfortable lounges and an open-air pool house. And for those who would rather soak up a bit of the starry night sky, gathering around the fire pit is an excellent option. Coming 2025.



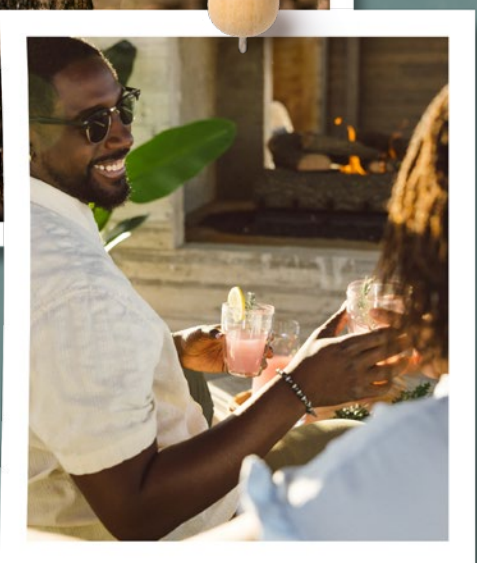
A NICE, BIG LAKE

Shimmering water has a way of carrying the day's stresses away. At 20 wonderful acres, Painted Tree Lake should do quite nicely.



WHEN THE DAY CAN TAKE YOU ANYWHERE, RIGHT HERE IS A GOOD PLACE TO START

Just a smidge northwest of Historic Downtown McKinney, a new kind of community is taking shape. Where carefully considered gathering spaces encourage adventure, exploration and relaxation. Neighbors connect over s'mores, under stars. And all kinds of distinct homes are nestled among three unique districts. We call it a trailside community. And there's much more to be explored.



No matter how you move through nature, it's sure to move you back.



PAINTED TREE

McKINNEY TEXAS



PAINTED TREE DISTRICTS + BUILDERS



LAKESIDE DISTRICT

Let water welcome you home, every day.

- CENTRE LIVING HOMES
Single-family Homes
- SOUTHGATE HOMES
Single-family Homes
- DREES CUSTOM HOMES
Single-family Homes
- TRI POINTE HOMES
Single-family Homes
- NORMANDY HOMES
Single-family Homes
- TROPHY SIGNATURE HOMES
Single-family Homes

VILLAGE DISTRICT

Friendly, walkable and filled with places to go.

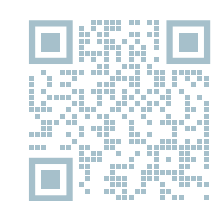
- CB JENI HOMES
Townhomes
- HIGHLAND HOMES
Single-family Homes
- DAVID WEEKLEY HOMES
Single-family Homes
- TRI POINTE HOMES
Single-family Homes

WOODLAND DISTRICT

Find yourself in the great outdoors.

- DREES CUSTOM HOMES
Single-family Homes
- COVENTRY HOMES
Single-family Homes
- BLOOMFIELD HOMES
Single-family Homes
- CYRENE AT PAINTED TREE
Homes for lease
- CB JENI HOMES
Townhomes

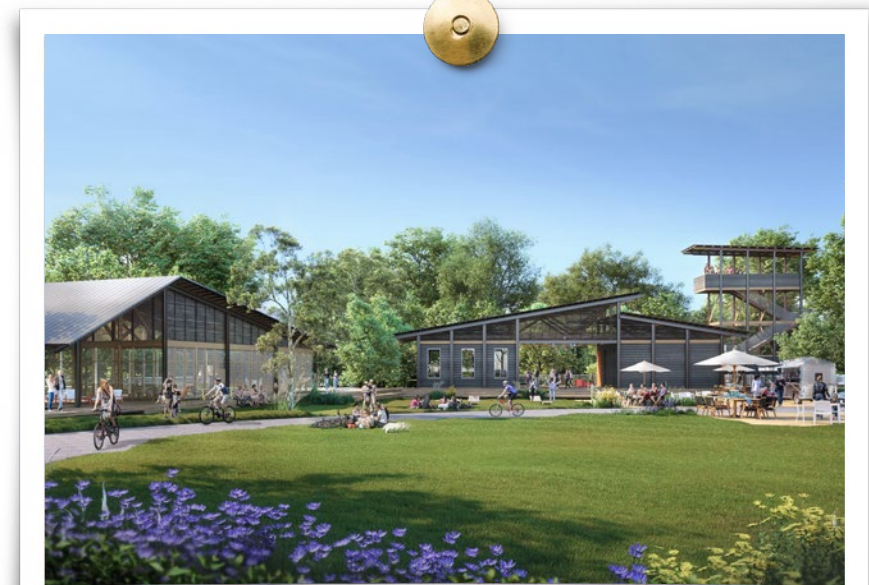
- M MODEL HOMES
- FUTURE HOMES FOR SALE
- OPEN SPACE
- ◆ SIGNATURE GREENWAY TRAILS
- COMMUNITY PATHS
- NATURE TRAILS



Scan for model homes open to tour.

THE OUTPOST 1

Taking a cue from our National Parks in both design and purpose, The Outpost is where our community can really be a community. Gathering spaces, a food truck court, outdoor-adventure park, playgrounds and two trailheads help spark the wonder and adventure in us all. Coming 2025.



Map is not to scale and is intended for informational and illustrative purposes only. Plans, uses, zoning, amenities, features, availability, acreage, sizes, dates, builders, and other elements are subject to change by Oxland Group or its affiliates without notice, and shall not be relied upon. July 2024