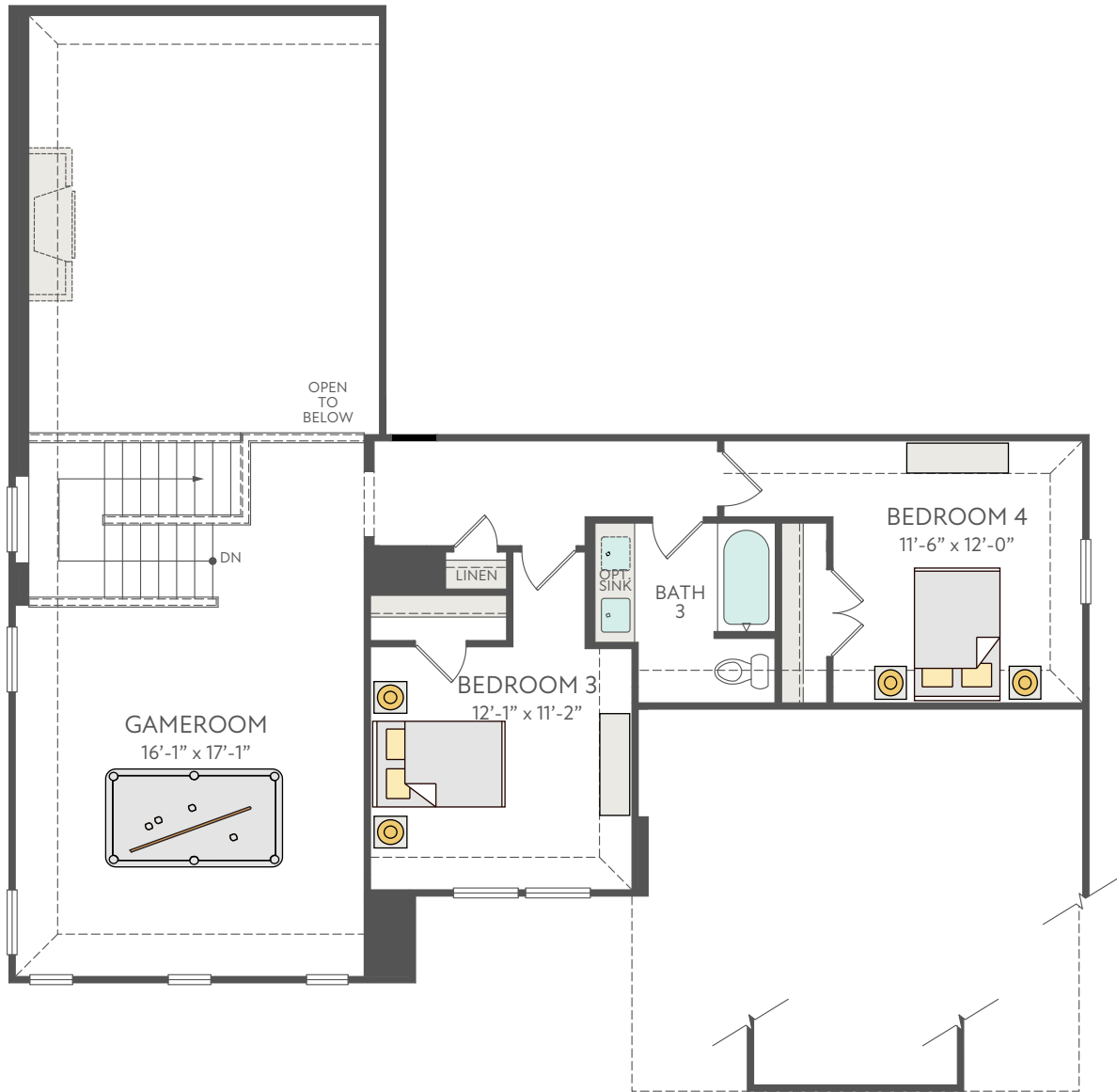


Painted Tree Logan Plan

3,187 - 3,534 sq Ft | 4 Bedrooms | 3.5 Bathrooms | 3 Bay Garage



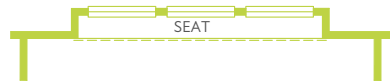
FIRST FLOOR



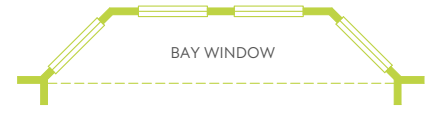
SECOND FLOOR



OPT. DINING BOX WINDOW



OPT. PRIMARY BEDROOM BOX WINDOW



OPT. PRIMARY BEDROOM BAY WINDOW



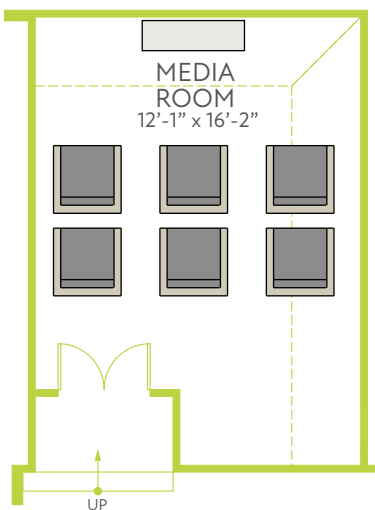
OPT. OUTDOOR FIREPLACE



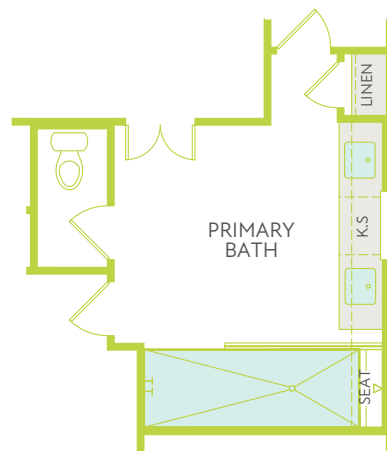
OPT. FIREPLACE AT GREAT ROOM



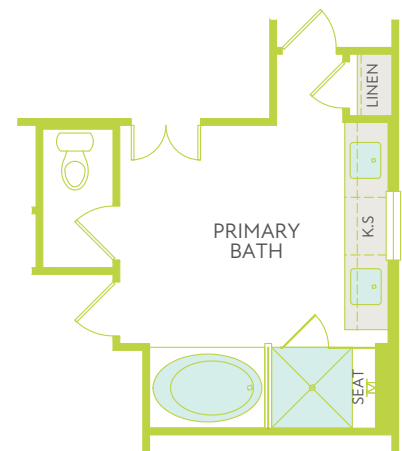
OPT. SLIDING GLASS DOOR



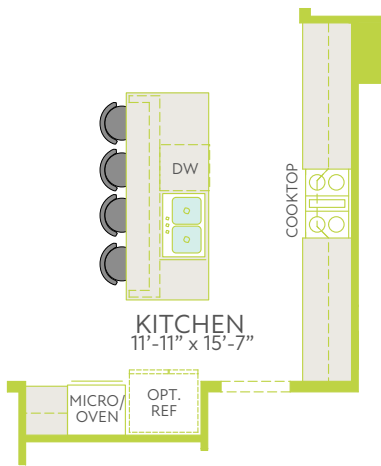
OPT. MEDIA ROOM



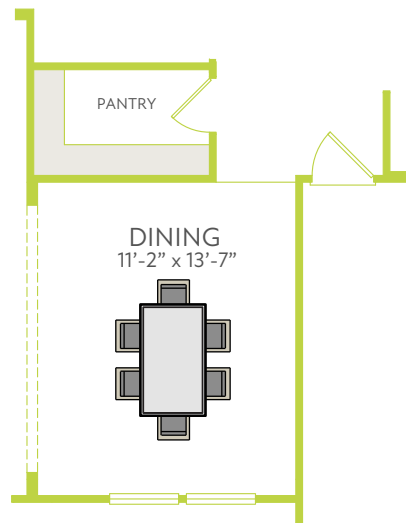
OPT. PRIMARY SPA SHOWER



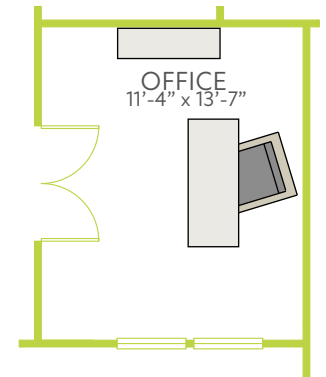
OPT. PRIMARY BATH WITH TUB



OPT. LUXURY KITCHEN



OPT. FLEX DINING



OPT. OFFICE