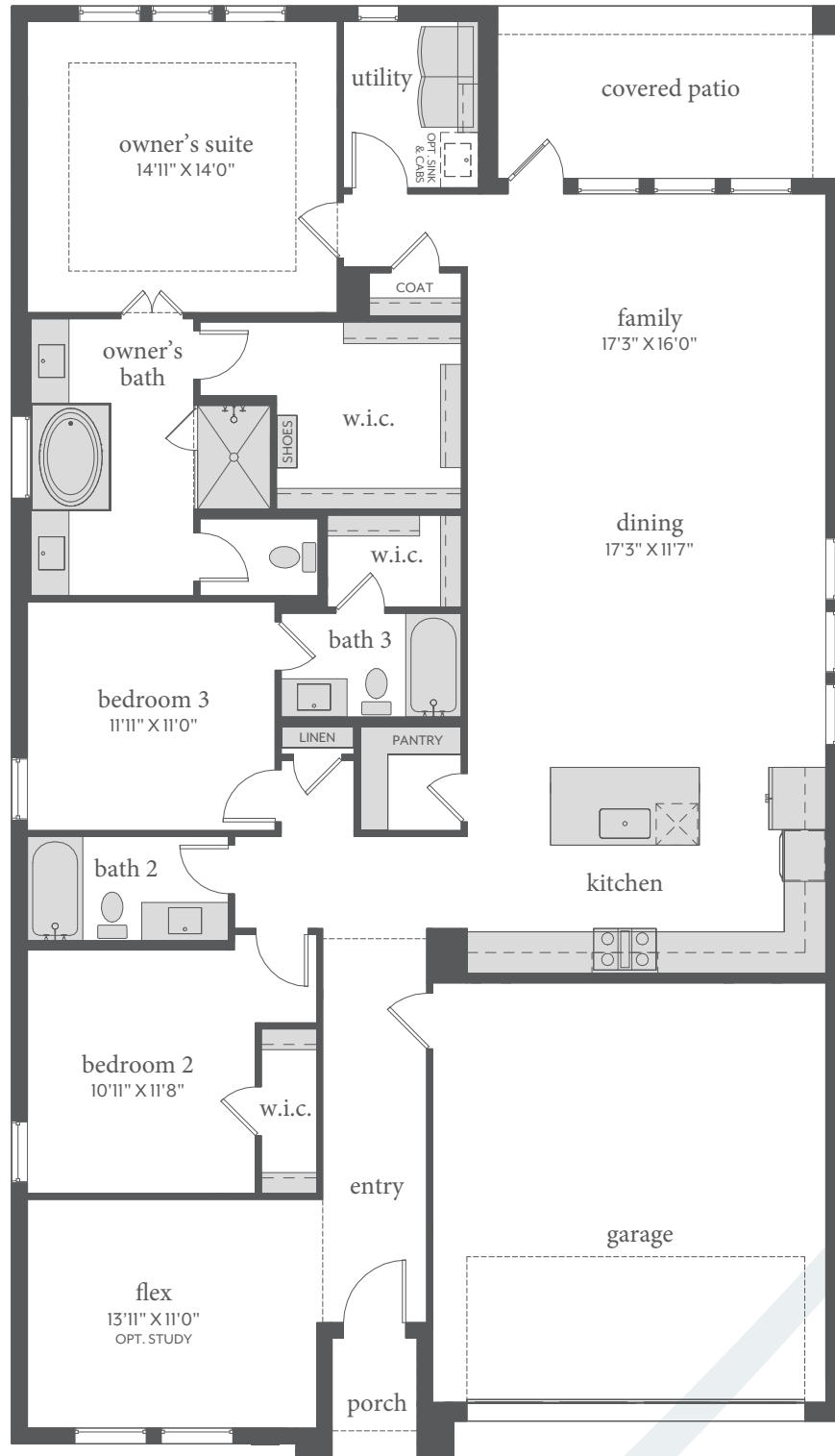


Painted Tree

BRICE | 2,163 Sq. Ft.* | 3 | 3 | 2



FIRST FLOOR - ELEVATION A*



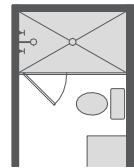
All dimensions and square footage are approximate at Painted Tree and subject to change. Illustrations are artist's conception and not reproductions of original plans. The Normandy Homes policy of continual attention to design and construction requires that specifications, equipment and dimensions be subject to change without notice. Certain options can change room count. Please consult Community Sales Manager for details. 2022

Painted Tree

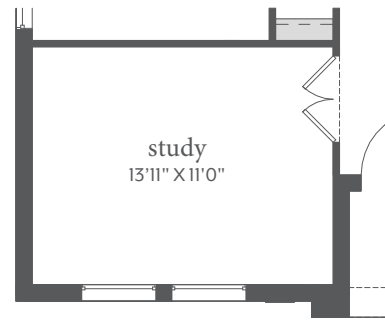
BRICE | 2,163 Sq. Ft.* |  3 |  3 |  2



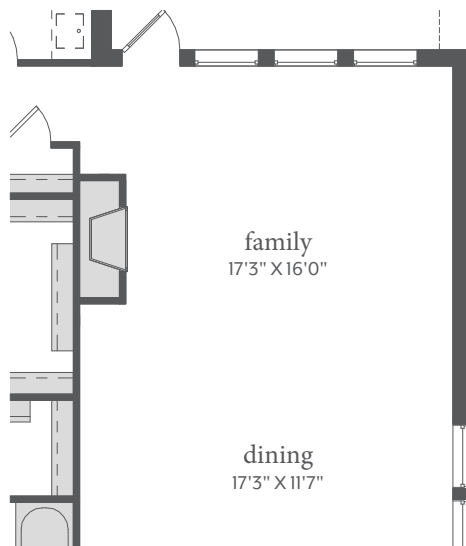
FIRST FLOOR - ELEVATION B



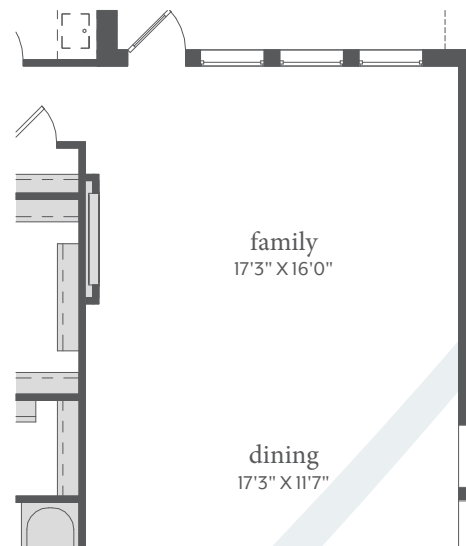
OPT. SHOWER I/O TUB
BATHS 2 & 3



OPT. STUDY I/O FLEX



OPT. FIREPLACE



OPT. ELECTIC FIREPLACE



All dimensions and square footage are approximate at Painted Tree and subject to change. Illustrations are artist's conception and not reproductions of original plans. The Normandy Homes policy of continual attention to design and construction requires that specifications, equipment and dimensions be subject to change without notice. Certain options can change room count. Please consult Community Sales Manager for details. 2022