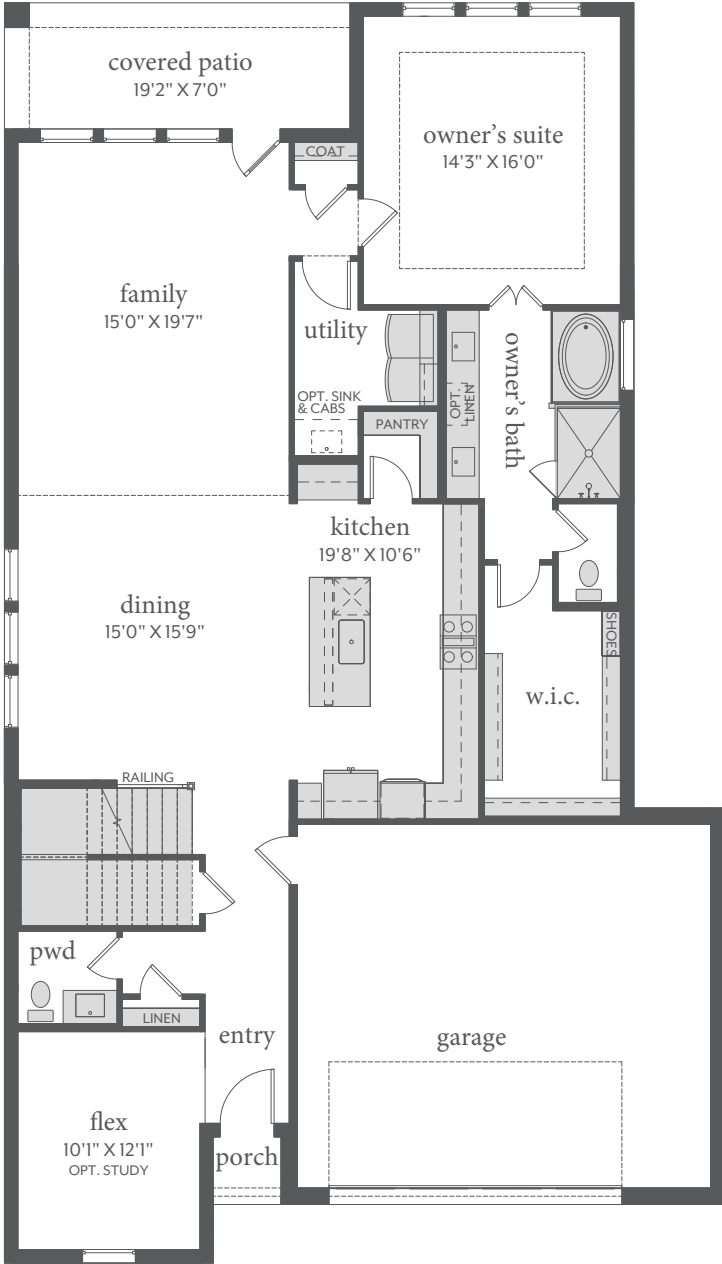
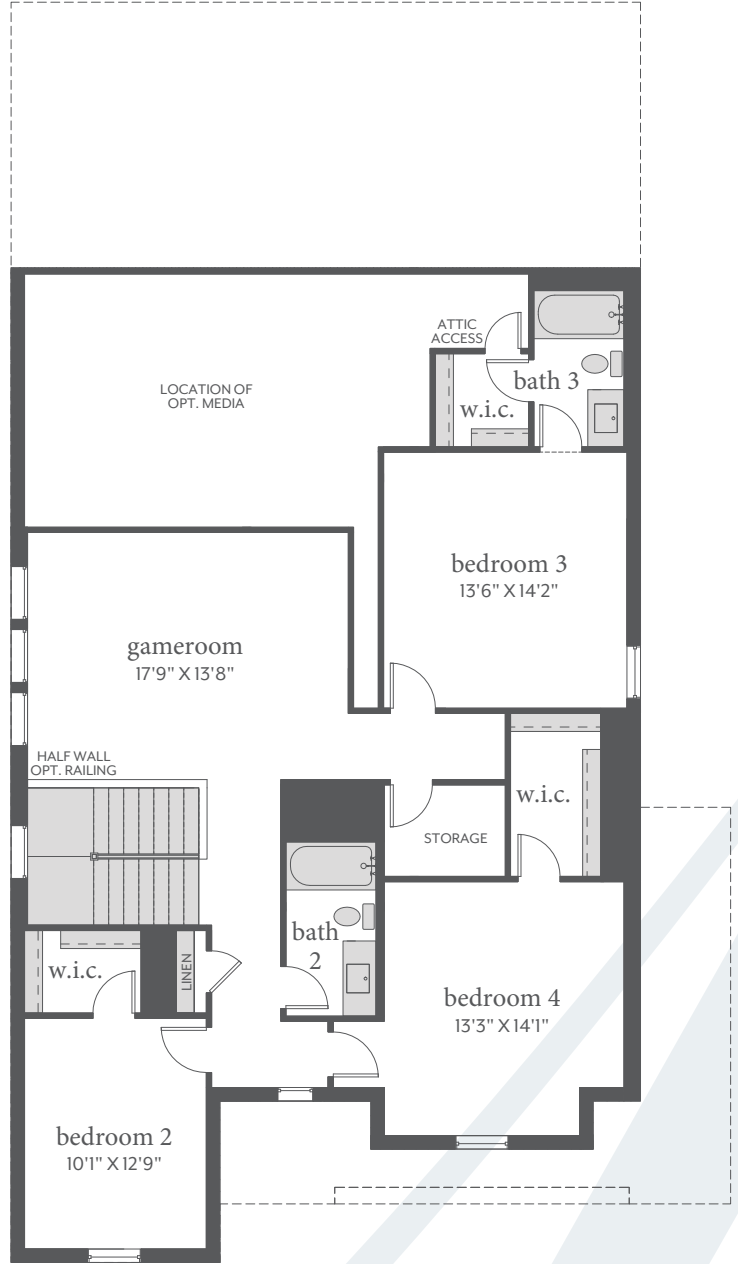


Painted Tree

MARSEILLE | 2,974 Sq. Ft.* | 4 | 3.5 | 2



FIRST FLOOR - ELEVATION A*



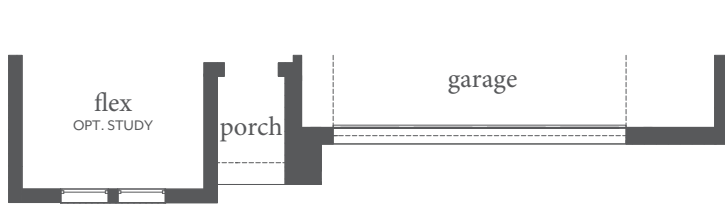
SECOND FLOOR - ELEVATION A*



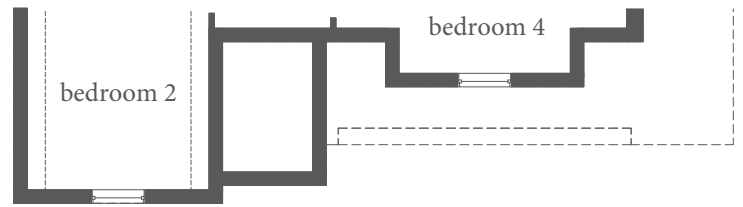
All dimensions and square footage are approximate at Painted Tree and subject to change. Illustrations are artist's conception and not reproductions of original plans. The Normandy Homes policy of continual attention to design and construction requires that specifications, equipment and dimensions be subject to change without notice. Certain options can change room count. Please consult Community Sales Manager for details. 1.14.2022

Painted Tree

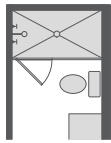
MARSEILLE | 2,974 Sq. Ft.* | 4 | 3.5 | 2



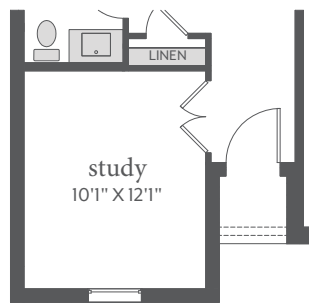
FIRST FLOOR - ELEVATION B



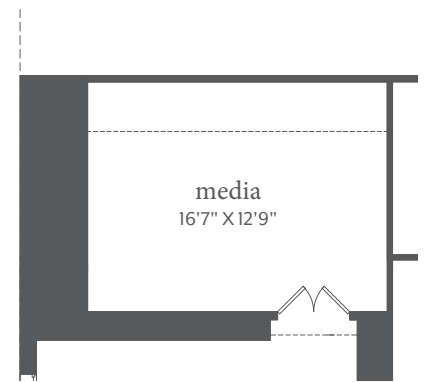
SECOND FLOOR - ELEVATION B



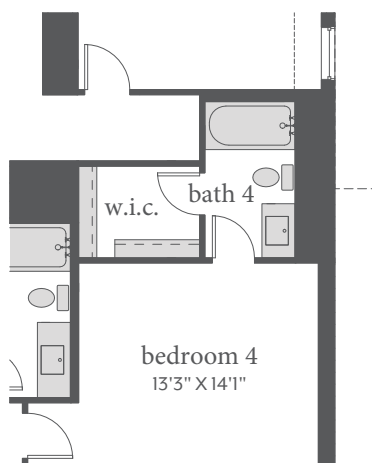
OPT. SHOWER ILO TUB
BATHS 2, 3 & 4



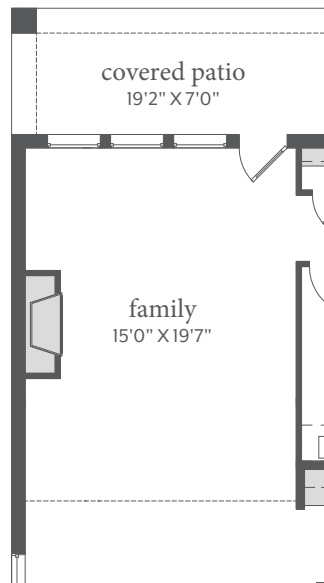
OPT. STUDY ILO FLEX



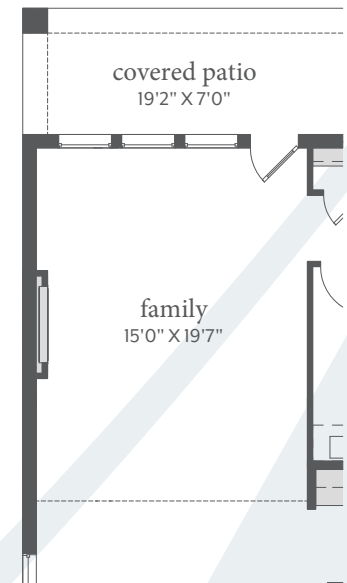
OPT. MEDIA



OPT. BATH 4



OPT. FIREPLACE



OPT. ELECTIC FIREPLACE



All dimensions and square footage are approximate at Painted Tree and subject to change. Illustrations are artist's conception and not reproductions of original plans. The Normandy Homes policy of continual attention to design and construction requires that specifications, equipment and dimensions be subject to change without notice. Certain options can change room count. Please consult Community Sales Manager for details. 1.14.2022