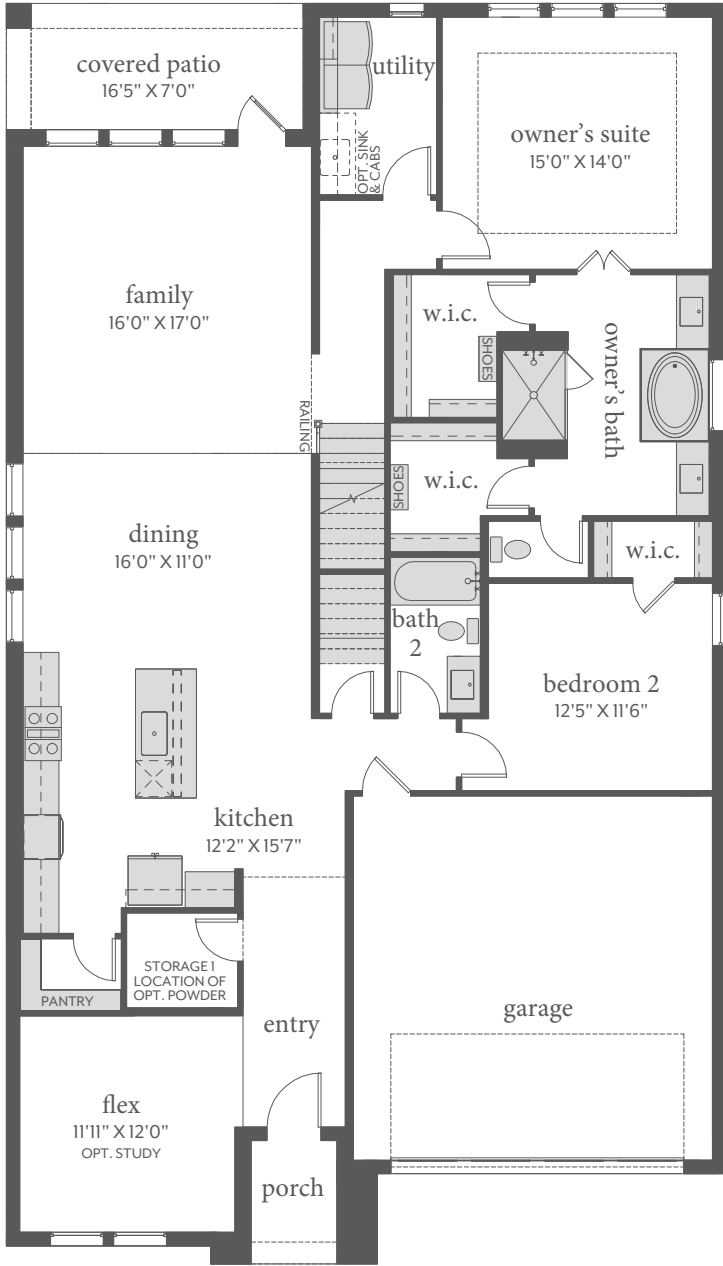
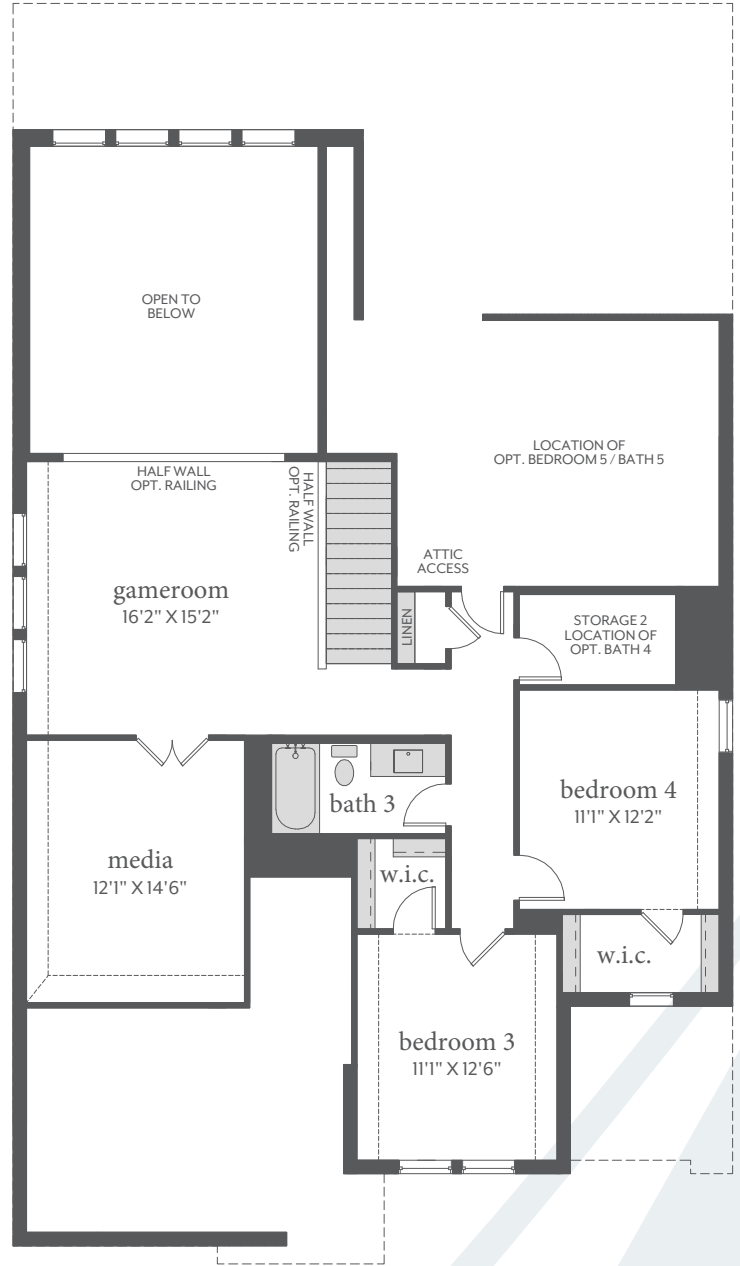


Painted Tree

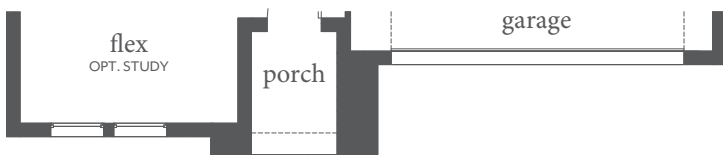
ORLEANS | 3,172 Sq. Ft.* | 4 | 3 | 2



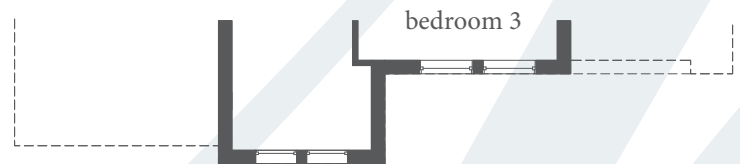
FIRST FLOOR - ELEVATION A*



SECOND FLOOR - ELEVATION A*



FIRST FLOOR - ELEVATION B



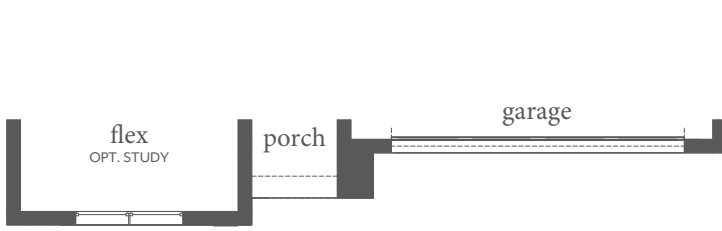
SECOND FLOOR - ELEVATION B



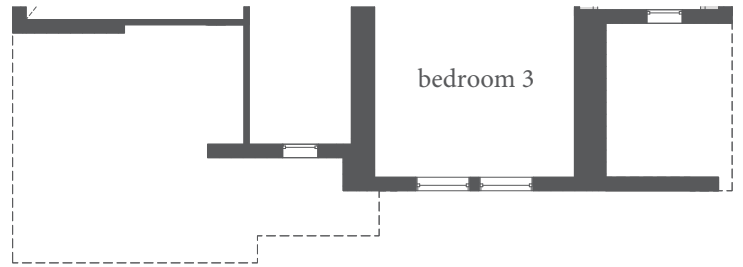
All dimensions and square footage are approximate at Painted Tree and subject to change. Illustrations are artist's conception and not reproductions of original plans. The Normandy Homes policy of continual attention to design and construction requires that specifications, equipment and dimensions be subject to change without notice. Certain options can change room count. Please consult Community Sales Manager for details. 1.14.2022

Painted Tree

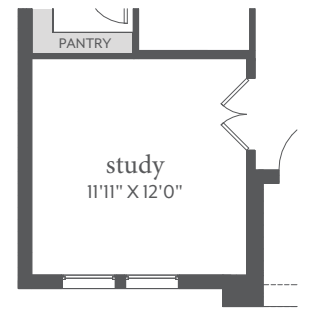
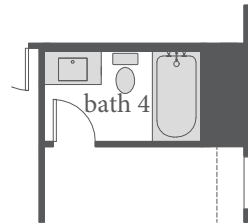
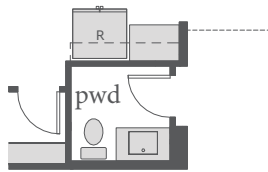
ORLEANS | 3,172 Sq. Ft.* | 4 | 3 | 2



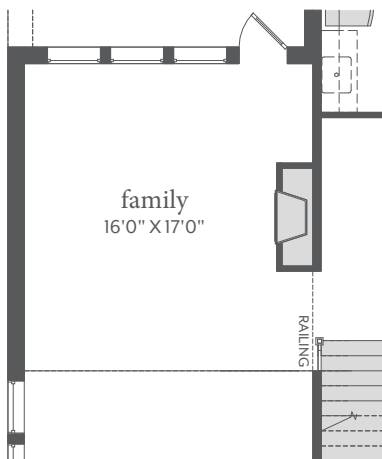
FIRST FLOOR - ELEVATION C



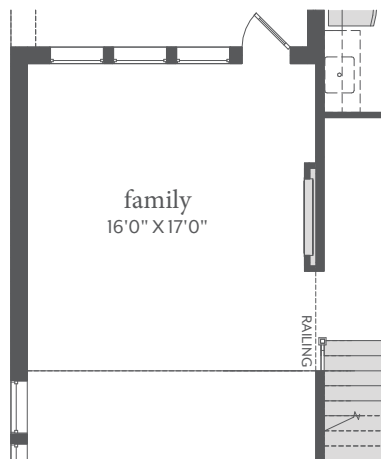
SECOND FLOOR - ELEVATION C



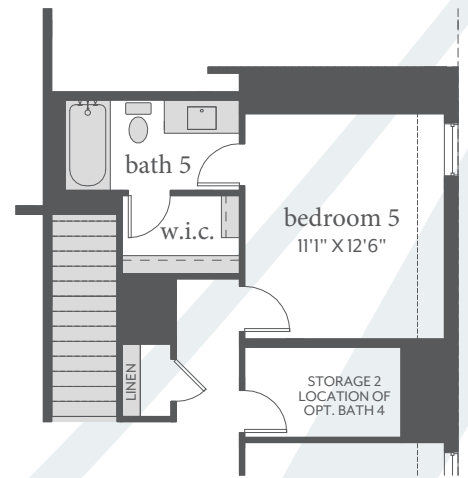
OPT. FIREPLACE



OPT. FIREPLACE



OPT. ELECTIC FIREPLACE



OPT. BEDROOM 5 / BATH 5



All dimensions and square footage are approximate at Painted Tree and subject to change. Illustrations are artist's conception and not reproductions of original plans. The Normandy Homes policy of continual attention to design and construction requires that specifications, equipment and dimensions be subject to change without notice. Certain options can change room count. Please consult Community Sales Manager for details. 1.14.2022