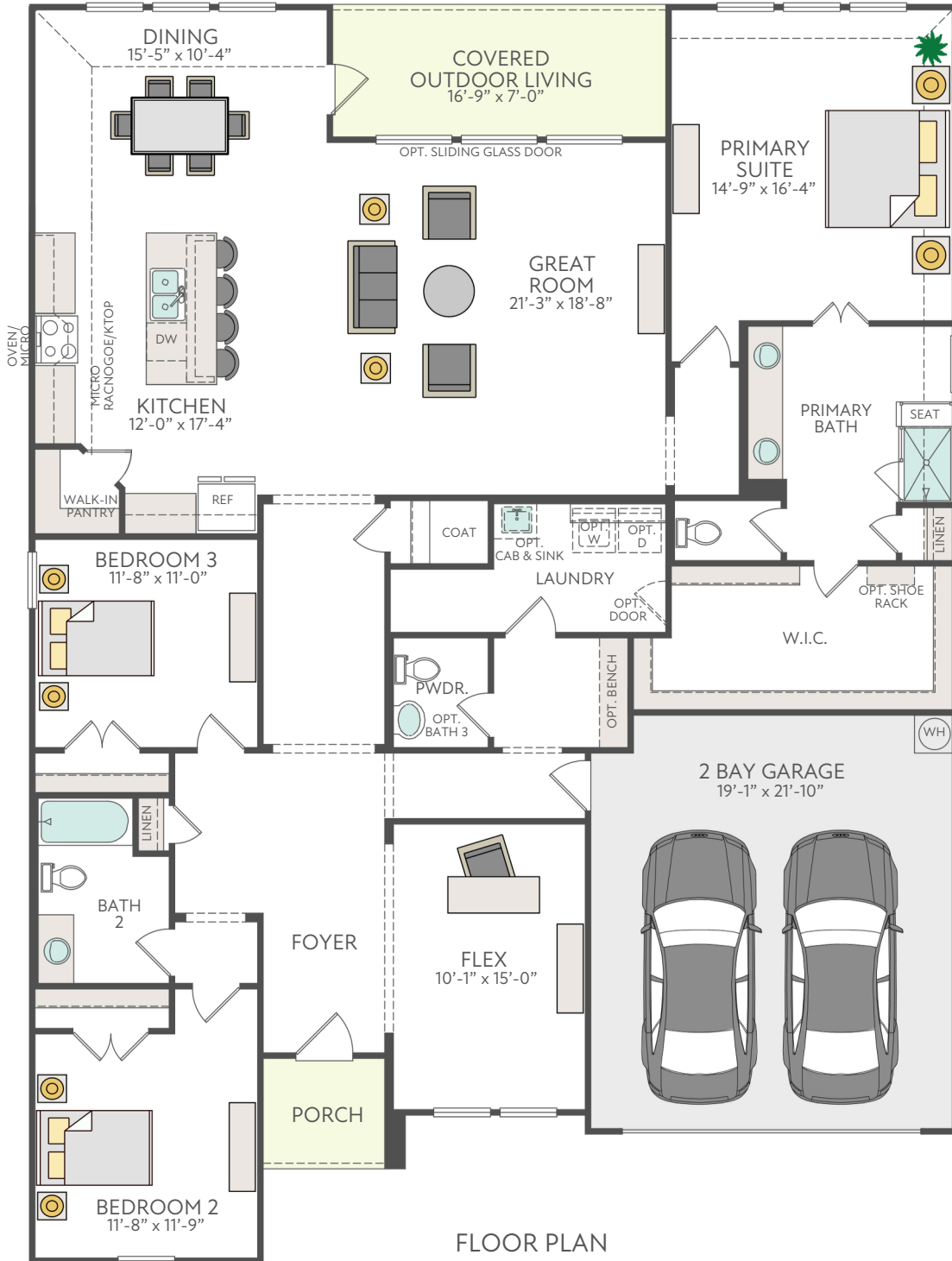


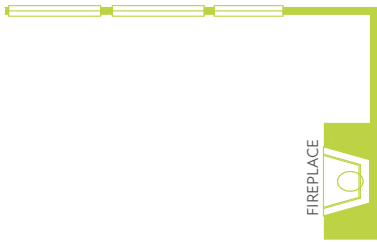
Painted Tree Bryson Plan

2,521 - 2,553 sq Ft | 3 - 4 Bedrooms | 2.5 - 3 Bathrooms | 2 Bay Garage



TriPointeHomes.com

The prices of our homes, included features, plans, specifications, promotions/incentives, neighborhood build-out, and available locations are subject to change without notice. Stated dimensions, square footage, and acreage are approximate and should not be used as a representation of any home's or homesite's precise or actual size, location, or orientation. There is no guarantee that any particular homesite or home will be available. No information or material herein is to be construed to be an offer or solicitation for sale. A Broker/Agent must register their client in person on the client's first visit at each community for a Broker/Agent to receive a commission or referral fee, if available. Not all features and options are available in all homes. Unless otherwise expressly stated, homes do not come with hardscape, landscape, or other decorator items. Any photographs or renderings used herein reflect artists' conceptions and are for illustrative purposes only. Community maps, illustrations, plans, and/or amenities reflect our current vision and are subject to change without notice. Maps not to scale. © 2023 Tri Pointe Homes, Inc. All rights reserved. tripothehomes.com/stalicensures-notices



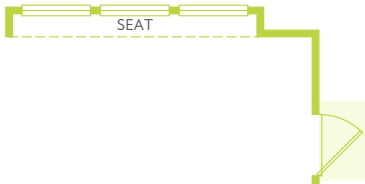
OPT. FIREPLACE AT GREAT ROOM



OPT. PRIMARY BEDROOM BAY WINDOW



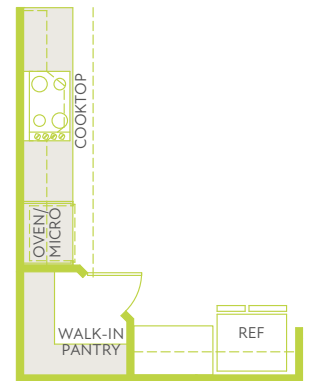
OPT. PRIMARY BEDROOM BOX WINDOW



OPT. DINING BOX WINDOW



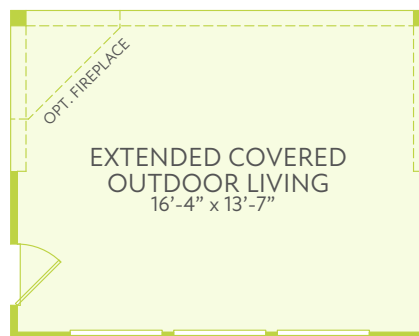
OPT. SLIDING GLASS DOOR AT GREAT ROOM ONLY AVAIL WITH OPT. COVERED OUTDOOR LIVING



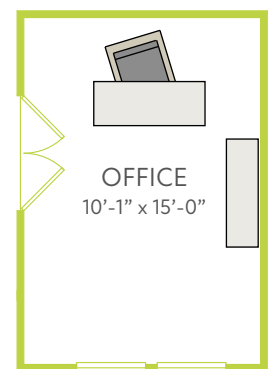
OPT. LUXURY KITCHEN



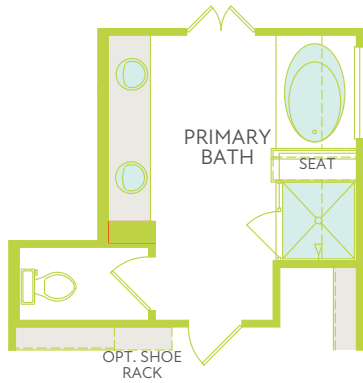
OPT. OUTDOOR FIREPLACE



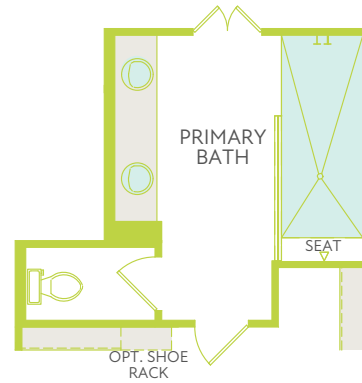
OPT. EXTENDED COVERED OUTDOOR LIVING



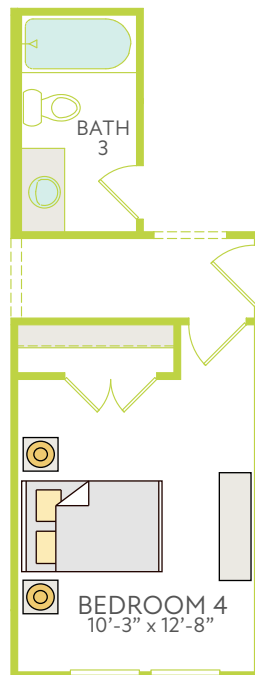
OPT. OFFICE



OPT. PRIMARY BATH WITH TUB



OPT. SPA SHOWER PRIMARY BATH



OPT. BEDROOM 4 WITH FULL BATH THIS
OPT. IS NOT AVAIL WITH PET CAMP OPT.