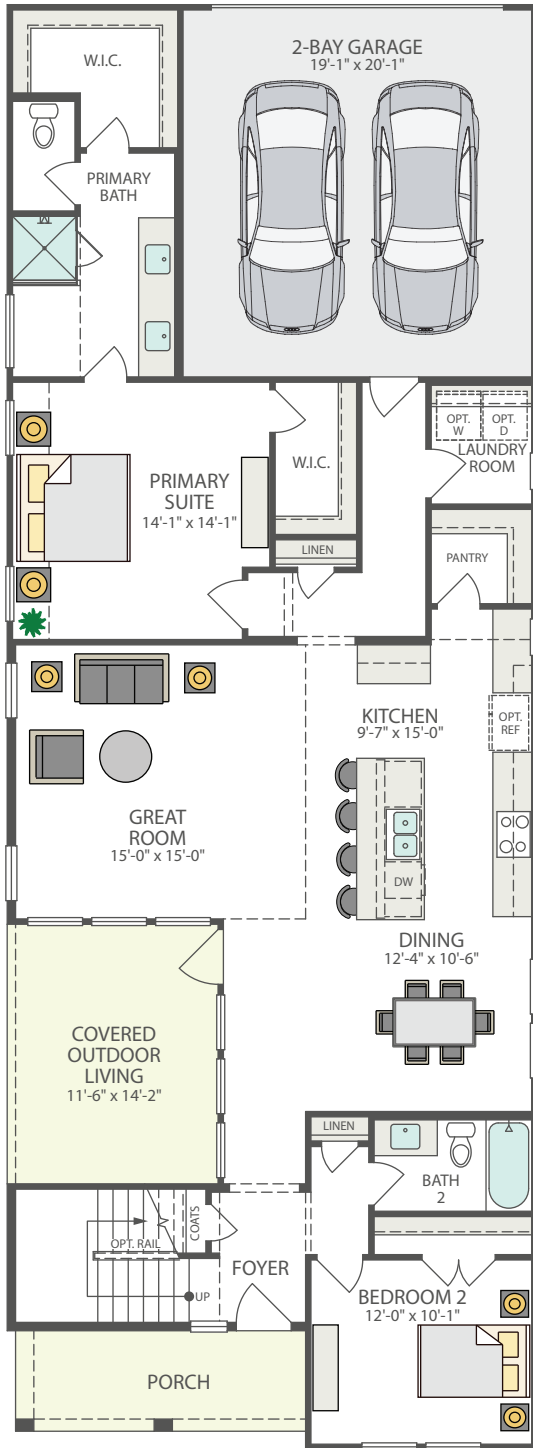


Painted Tree **Victoria Plan**

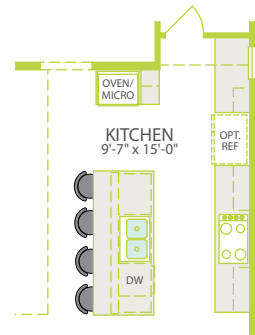
2,469 - 2,491 sq Ft | 3-4 Bedrooms | 3 Bathrooms | 2 Bay Garage



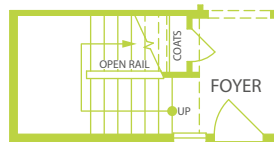
FIRST FLOOR



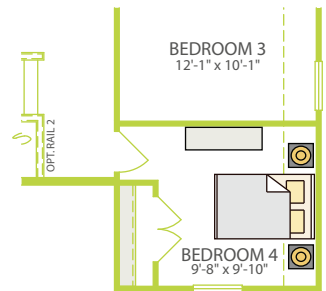
OPT. PRIMARY BATH WITH TUB



OPT. LUXURY KITCHEN



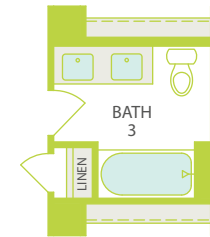
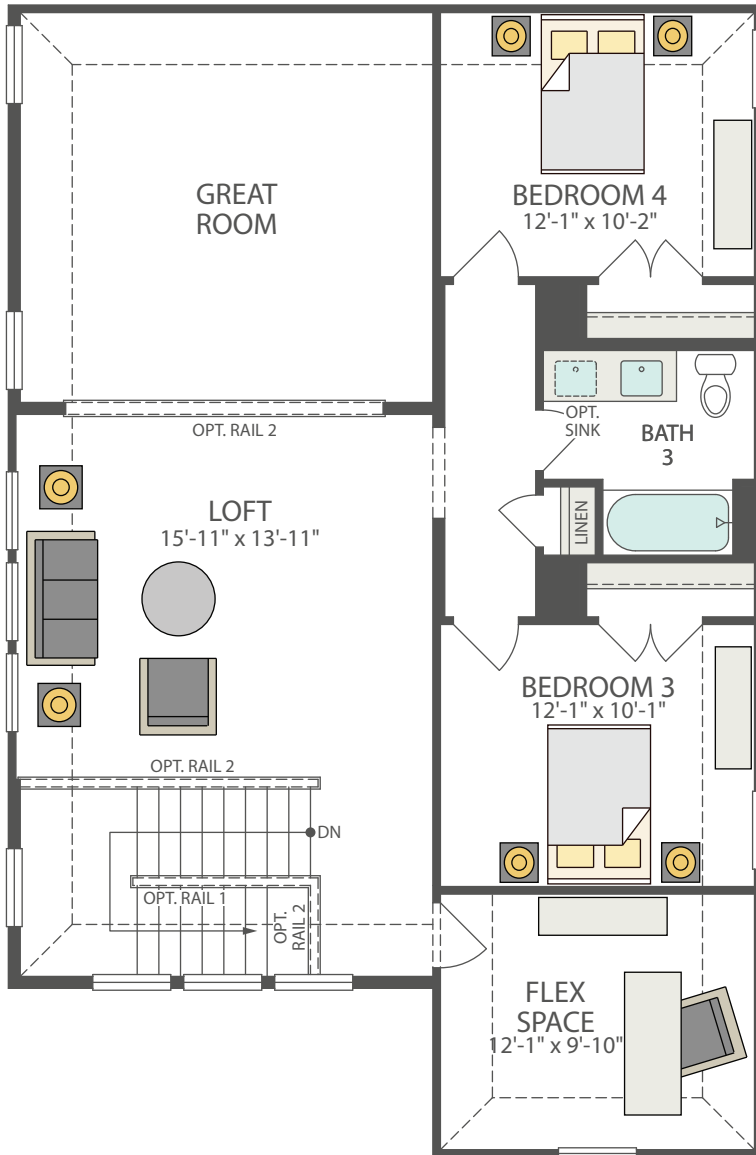
OPT. OPEN RAIL AT FIRST FLOOR



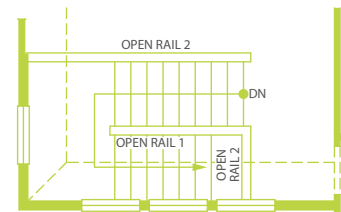
OPT. BEDROOM 4 I.L.O. FLEX

TriPointeHomes.com

The prices of our homes, included features, plans, specifications, promotions/incentives, neighborhood build-out, and available locations are subject to change without notice. Stated dimensions, square footage, and acreage are approximate and should not be used as a representation of any home's or homesite's precise or actual size, location, or orientation. There is no guarantee that any particular homesite or home will be available. No information or material herein is to be construed to be an offer or solicitation for sale. A Broker/Agent must register their client in person on the client's first visit at each community for a Broker/Agent to receive a commission or referral fee, if available. Not all features and options are available in all homes. Unless otherwise expressly stated, homes do not come with hardscape, landscape, or other decorator items. Any photographs or renderings used herein reflect artists' conceptions and are for illustrative purposes only. Community maps, illustrations, plans, and/or amenities reflect our current vision and are subject to change without notice. Maps not to scale. © 2023 Tri Pointe Homes, Inc. All rights reserved. tripoonthomes.com/statelicense-notices



OPT. SINK AT BATH 3



OPT. OPEN RAIL AT SECOND FLOOR

SECOND FLOOR