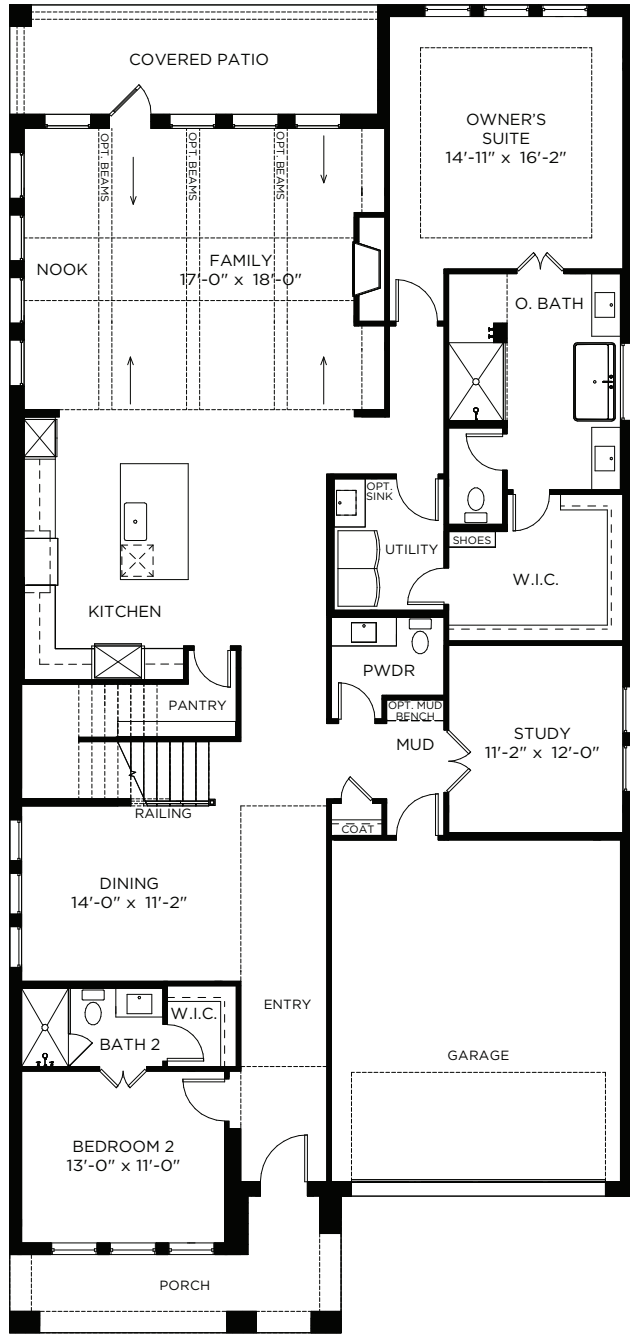


# Geneva IV

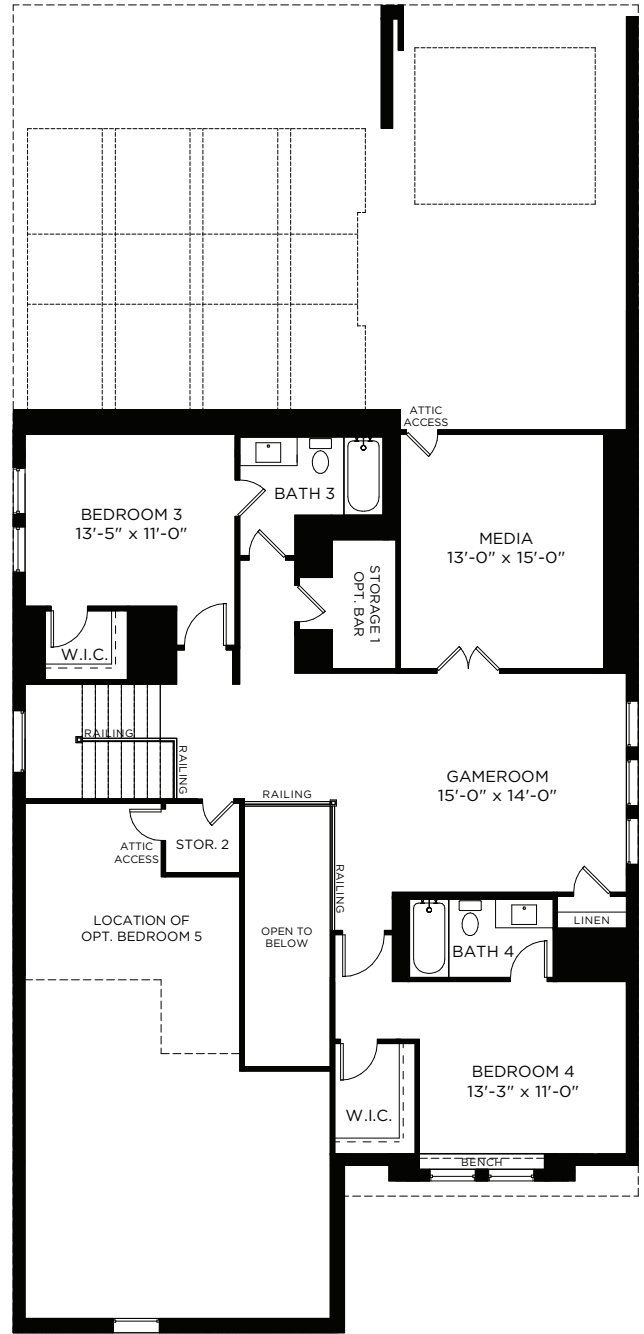
50' SERIES



4 4.5 2 2 3,782 SQ FT\*



1ST FLOOR - ELEVATION A\*



2ND FLOOR - ELEVATION A\*

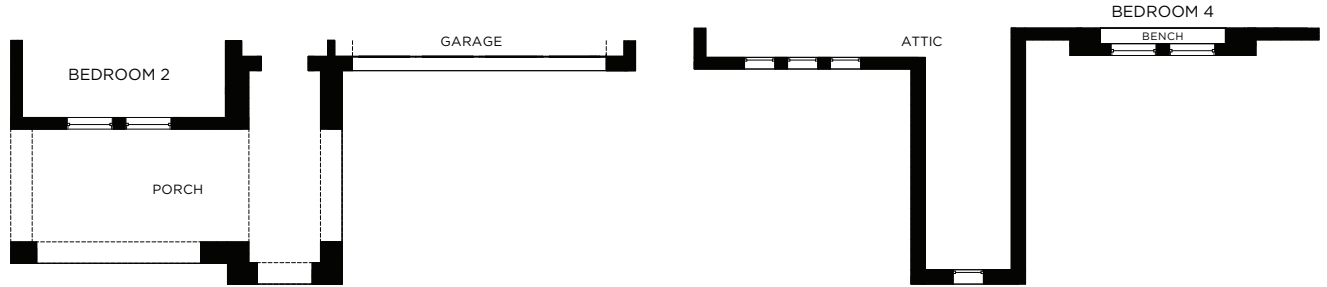
All dimensions and square footage are approximate at Painted Tree and subject to change. Illustrations are artist's concept and not reproductions of original plans. The Southgate Homes policy of continual attention to design and construction requires that specifications, equipment and dimensions be subject to change without notice. Certain options can change room count. Please consult Community Sales Manager for details. 11.15.2024

© 2024 Southgate Homes. All rights reserved. Southgate Homes is a subsidiary of Green Brick Partners (NYSE: GRBK).



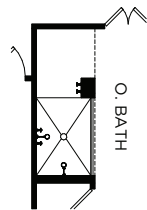
# Geneva IV

50' SERIES

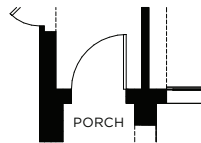


1ST FLOOR - ELEVATION B

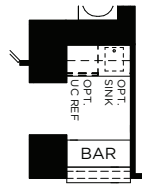
2ND FLOOR - ELEVATION B



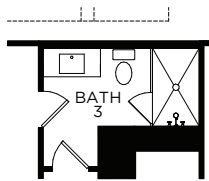
OPT. 2ND SHOWER HEAD DETAIL



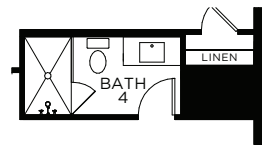
OPT. 3680 FRONT DOOR



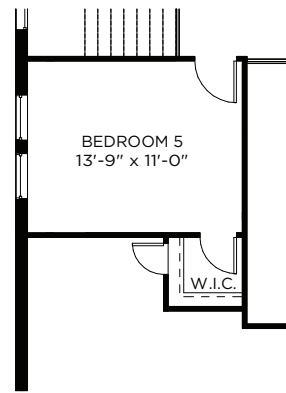
OPT. BAR ILO STORAGE 1



OPT. SHOWER AT BATH 3



OPT. SHOWER AT BATH 4



OPT. BEDROOM 5

All dimensions and square footage are approximate at Painted Tree and subject to change. Illustrations are artist's concept and not reproductions of original plans. The Southgate Homes policy of continual attention to design and construction requires that specifications, equipment and dimensions be subject to change without notice. Certain options can change room count. Please consult Community Sales Manager for details. 11.24.2024

© 2024 Southgate Homes. All rights reserved. Southgate Homes is a subsidiary of Green Brick Partners (NYSE: GRBK).

