

# Prescott III

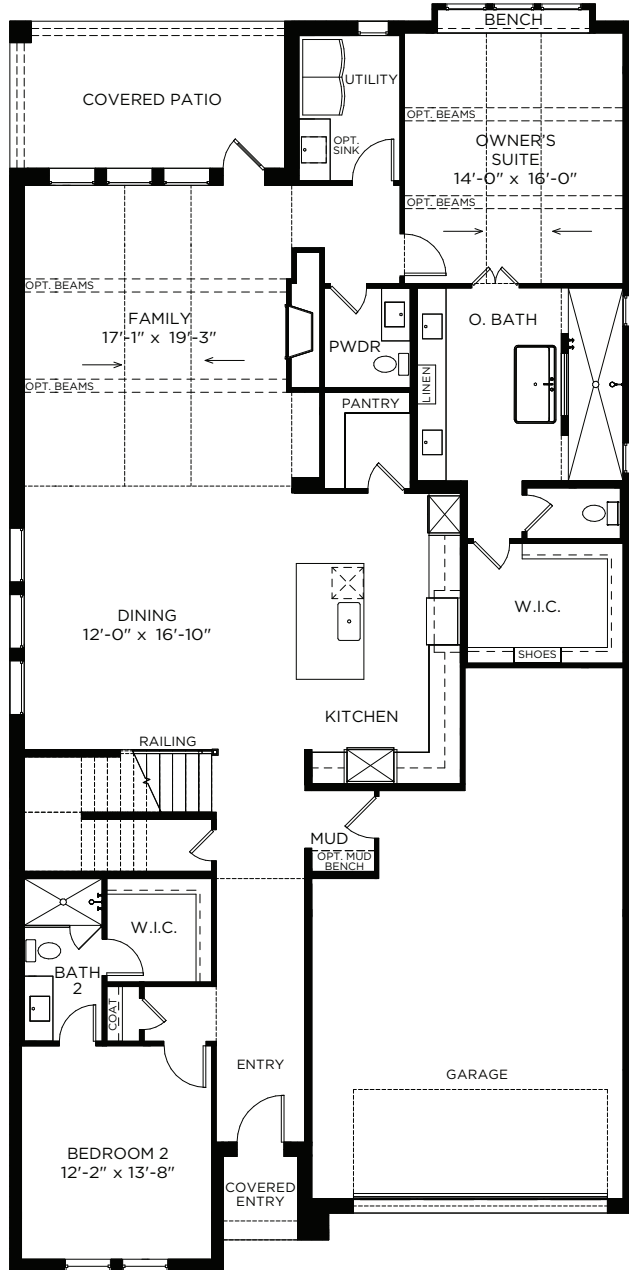
50' SERIES



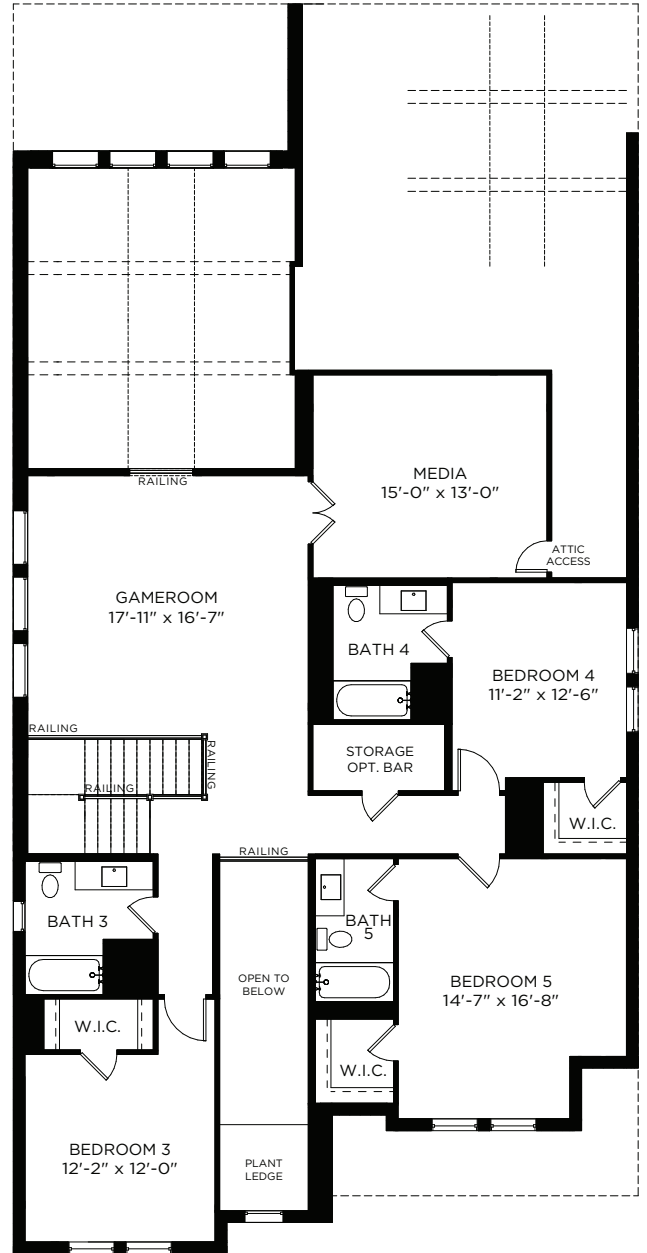
**SOUTHGATE  
HOMES**

A GREEN BRICK PARTNER

5 5.5 3 2 3,916 SQ FT\*



1ST FLOOR - ELEVATION A\*



2ND FLOOR - ELEVATION A\*

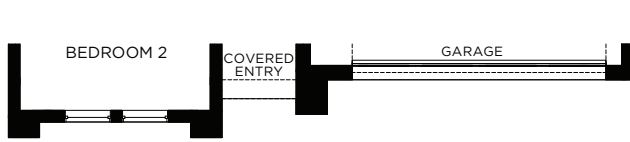
All dimensions and square footage are approximate at Painted Tree and subject to change. Illustrations are artist's concept and not reproductions of original plans. The Southgate Homes policy of continual attention to design and construction requires that specifications, equipment and dimensions be subject to change without notice. Certain options can change room count. Please consult Community Sales Manager for details. 11.15.2024

© 2024 Southgate Homes. All rights reserved. Southgate Homes is a subsidiary of Green Brick Partners (NYSE: GRBK).

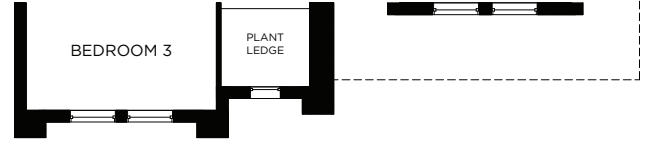


# Prescott III

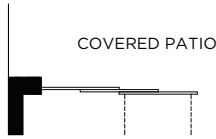
50' SERIES



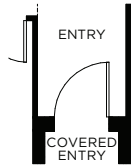
1ST FLOOR - ELEVATION B



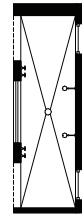
2ND FLOOR - ELEVATION B



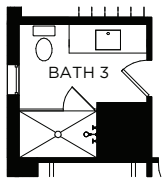
OPT. SLIDING DOOR AT FAMILY



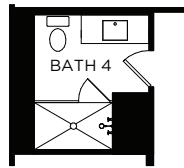
OPT. 3680 FRONT DOOR



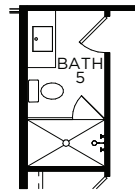
OPT. 2ND SHOWER HEAD DETAIL



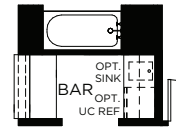
OPT. SHOWER AT BATH 3



OPT. SHOWER AT BATH 4



OPT. SHOWER AT BATH 5



OPT. BAR ILO STORAGE 1

All dimensions and square footage are approximate at Painted Tree and subject to change. Illustrations are artist's concept and not reproductions of original plans. The Southgate Homes policy of continual attention to design and construction requires that specifications, equipment and dimensions be subject to change without notice. Certain options can change room count. Please consult Community Sales Manager for details. 11.15.2024

© 2024 Southgate Homes. All rights reserved. Southgate Homes is a subsidiary of Green Brick Partners (NYSE: GRBK).

