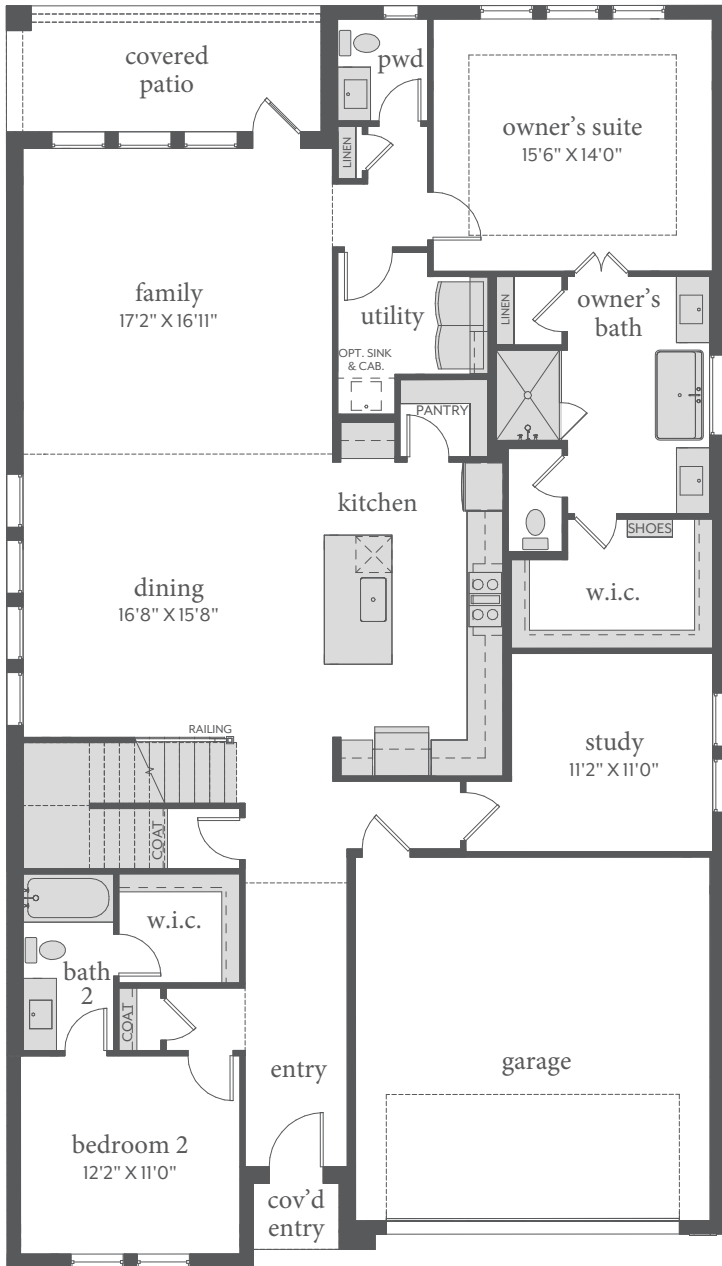


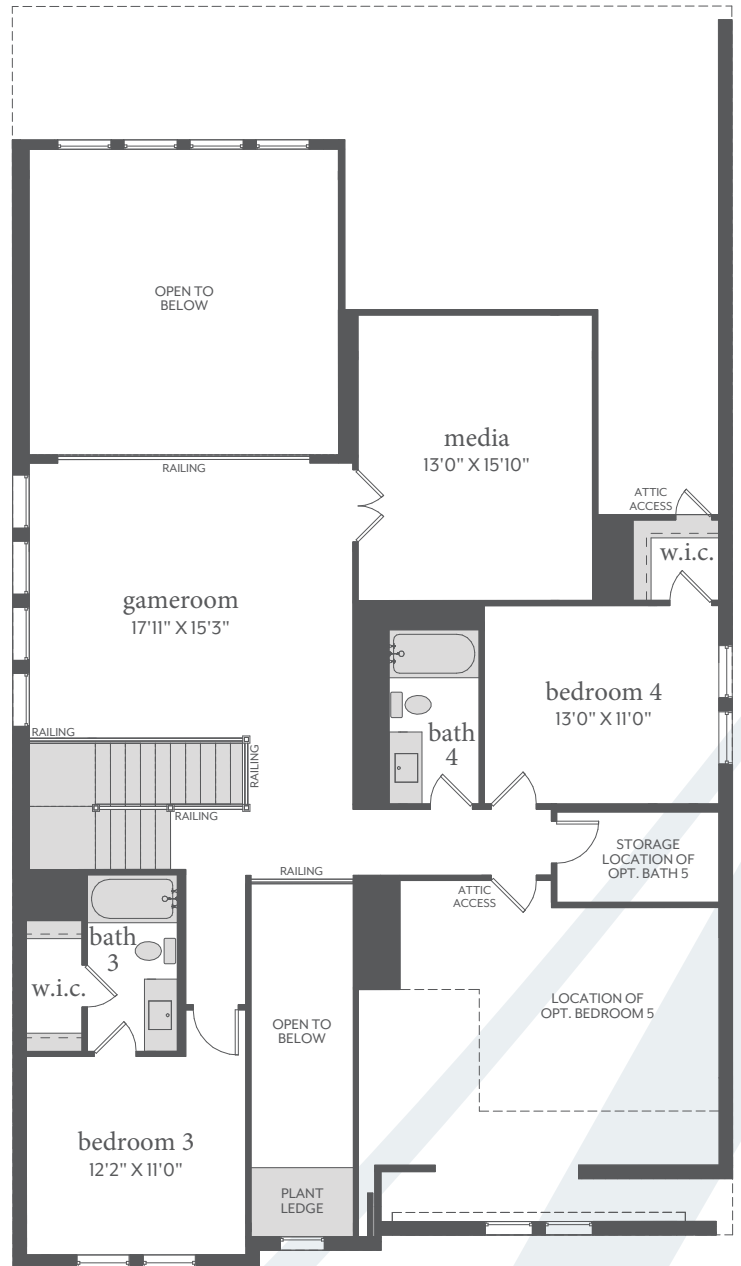
# Painted Tree - Woodland West



TRISTAN | 3,393 Sq. Ft.\* | 4 | 4.5 | 2



FIRST FLOOR - ELEVATION A\*



SECOND FLOOR - ELEVATION A\*

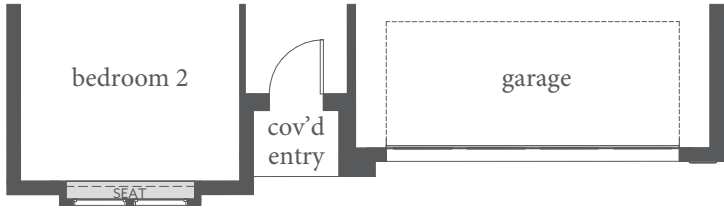


All home plans and renderings are for illustrative purposes only and are not to scale. Dimensions, square footage and specifications may vary and are subject to change without notice. Structural and elevation options can change room count and square footage. Variations in layout, design, and finishes may occur based on home site, elevation, and other factors. Measurements are approximate and can vary at final construction. Normandy Homes reserves the right to discontinue plans or make changes and substitutions as necessary to meet building code requirements, site conditions, or other requirements. Please contact the Community Sales Manager for complete details. 09.06.2024 © 2025 Normandy Homes. All rights reserved. Normandy Homes is a subsidiary of Green Brick Partners (NYSE: GRBK).

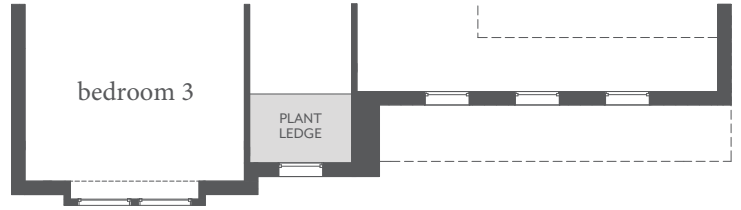
# Painted Tree - Woodland West



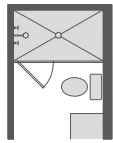
TRISTAN | 3,393 Sq. Ft.\* | 4 | 4.5 | 2



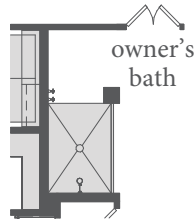
FIRST FLOOR - ELEVATION B



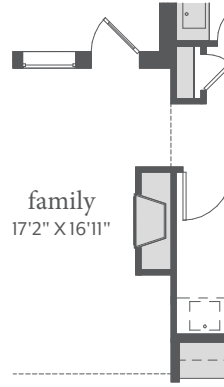
SECOND FLOOR - ELEVATION B



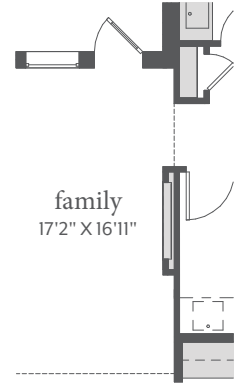
OPT. SHOWER ILO TUB  
BATH 2, 3, 4 & 5



OPT. OWNER'S SHOWER  
WITH NO DOORS



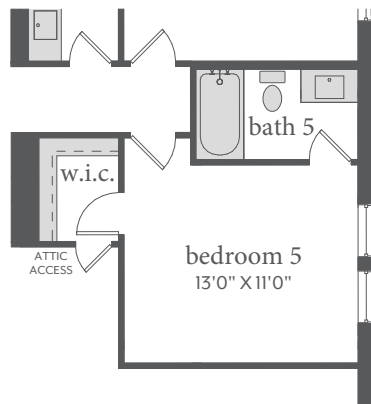
OPT. FIREPLACE



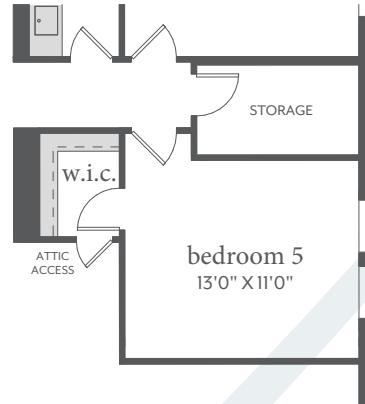
OPT. ELECTRIC  
FIREPLACE

family  
17'2" X 16'11"

family  
17'2" X 16'11"



OPT. BEDROOM 5 / BATH 5



OPT. BEDROOM 5



All home plans and renderings are for illustrative purposes only and are not to scale. Dimensions, square footage and specifications may vary and are subject to change without notice. Structural and elevation options can change room count and square footage. Variations in layout, design, and finishes may occur based on home site, elevation, and other factors. Measurements are approximate and can vary at final construction. Normandy Homes reserves the right to discontinue plans or make changes and substitutions as necessary to meet building code requirements, site conditions, or other requirements. Please contact the Community Sales Manager for complete details. 09.06.2024 © 2025 Normandy Homes. All rights reserved. Normandy Homes is a subsidiary of Green Brick Partners (NYSE: GRBK).